

## Materiál Ministerstva vnitra



Export z Národní architektury eGovernmentu ČR

# Obsah

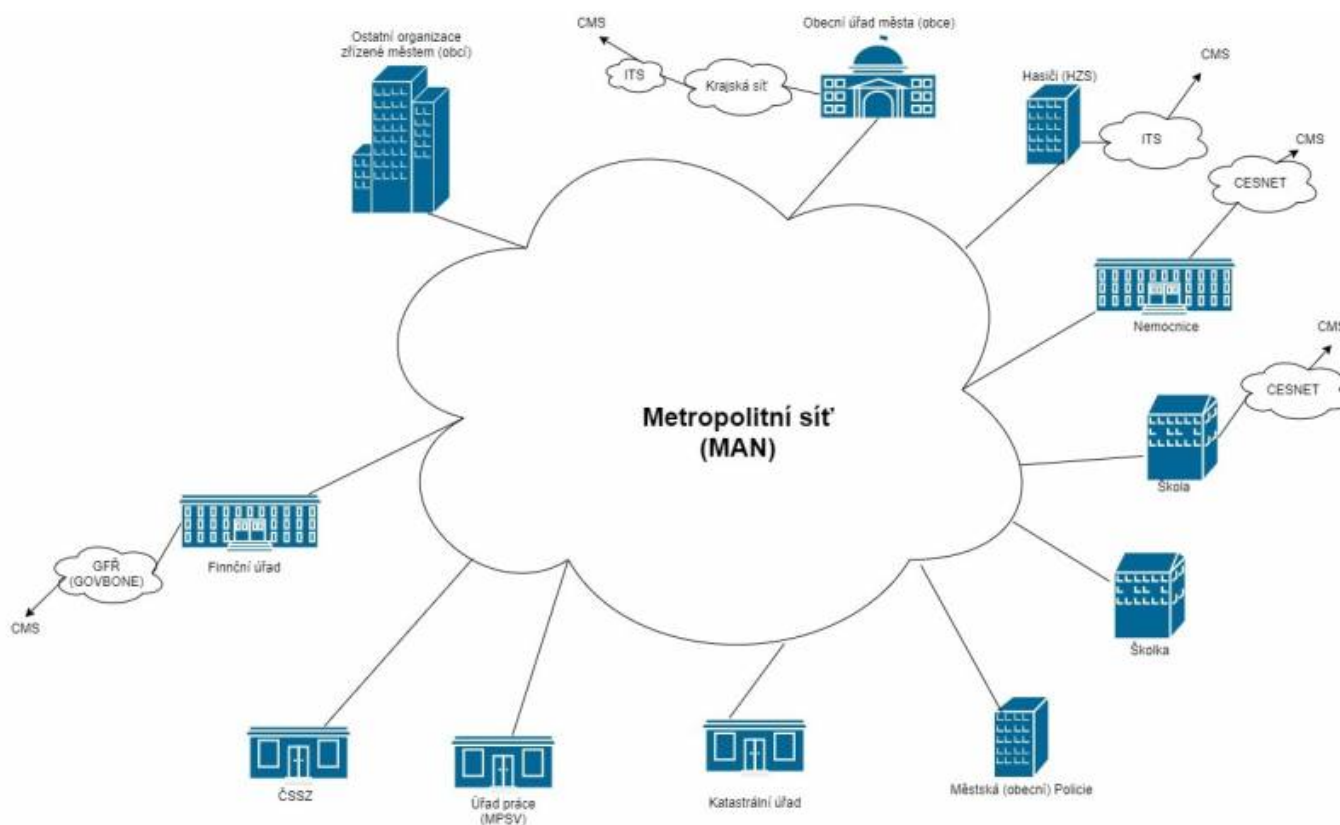
**Connecting Metropolitan Networks to CMS ..... 3**  
    *Definition of Metropolitan Area Network (MAN) ..... 3*  
    *Description of how to connect the Metropolitan Network to the CMS ..... 3*

# Connecting Metropolitan Networks to CMS

The following describes the variants and method of connecting Metropolitan Networks (MAN) to [Central Point of Service \(CMS\)](#) via Regional Networks, Territorial Departments of the Police of the Czech Republic, Academic Network CESNET or Financial Offices (GFD network).

## Definition of Metropolitan Area Network (MAN)

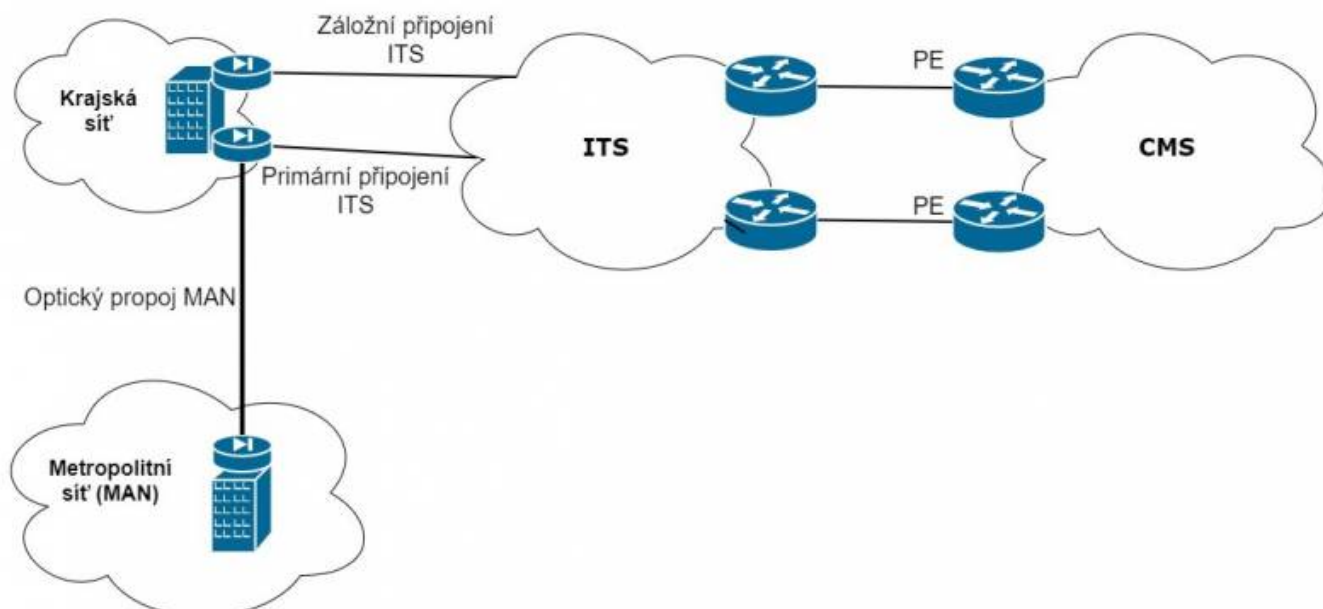
The Metropolitan Area Network is the city's optical communications backbone - a high-capacity, high-speed communications infrastructure. The primary purpose of this network is to connect the City's public offices, educational facilities, hospital facilities, fire department, cultural and social facilities, and other entities established by the City. One of the services provided by the Metropolitan Networks of the Future is the connection to [CMS/KIVS](#).



## Description of how to connect the Metropolitan Network to the CMS

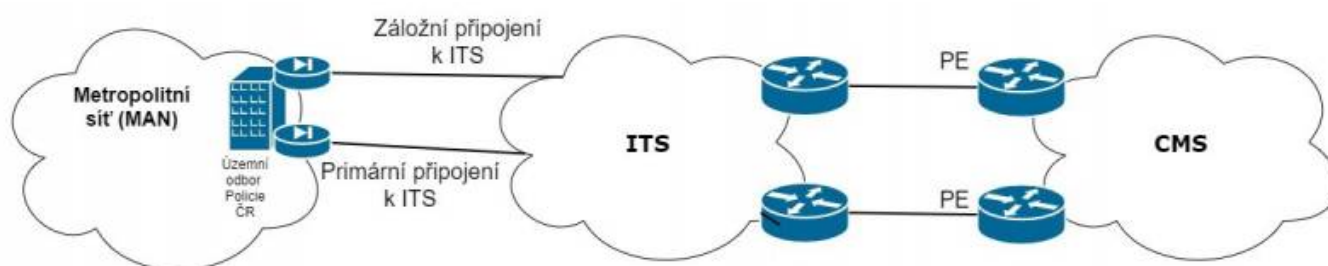
### Connecting the Metropolitan Network through the Regional Network

A condition for connecting MAN via the regional network is a functional optical link between MAN and the regional network, see Figure 2.



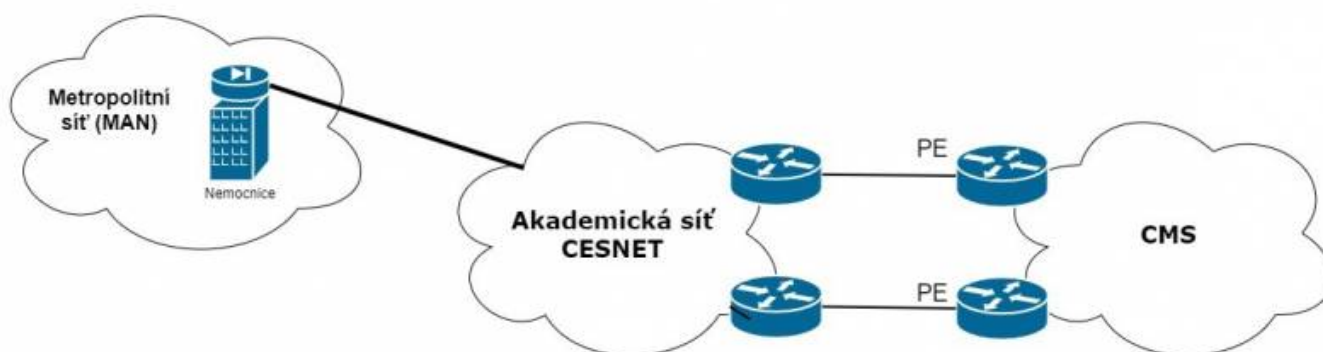
### Connection of the Metropolitan Network via the Territorial Department of the Police of the Czech Republic

A condition for connecting MAN via the Territorial Police Department is a functional optical link between MAN and the Territorial Police Department, see Figure 3.



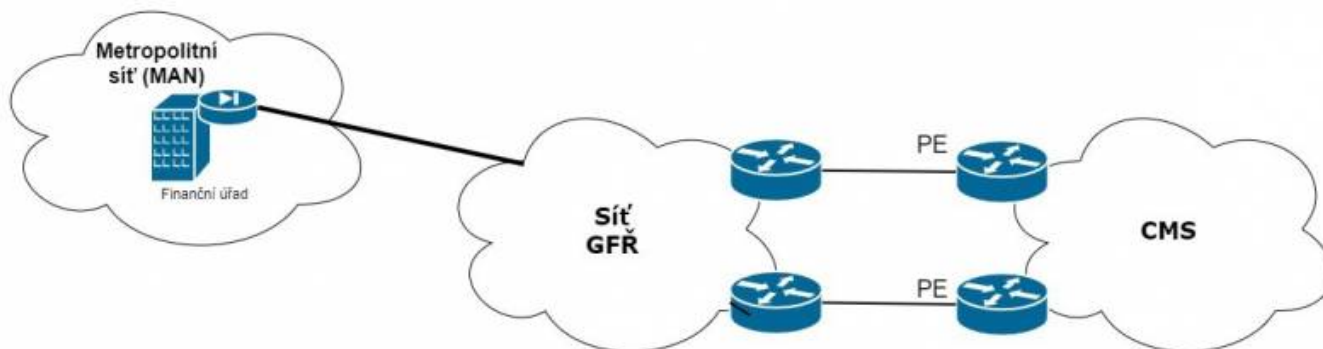
### Connecting the Metropolitan Network through the Academic Network CESNET

The condition for connecting MAN via the CESNET Academic Network is membership in the CESNET Interest Group and having a functional optical link between MAN and the CESNET Academic Network, see Figure 4.



### Connecting the Metropolitan Network through the GFD network

A condition for connecting MAN via the GFD network is a functional optical link between MAN and the GFD network, see Figure 5.



From:

<https://archi.gov.cz/> - Architektura eGovernmentu ČR

Permanent link:

[https://archi.gov.cz/en:nap:metropolitni\\_site](https://archi.gov.cz/en:nap:metropolitni_site)

Last update: **2021/08/17 14:13**

